

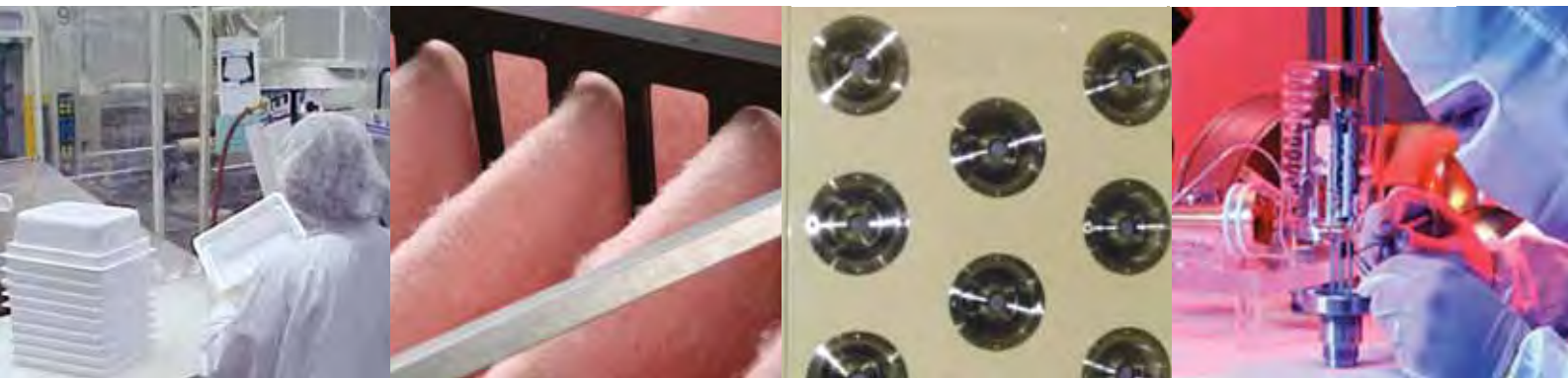
R u b y Q u e s t B e r h a d



RUBY QUEST BERHAD (412406-T)
No. 6, Jalan Salung 33/26, Shah Alam Technology Park
Section 33, 40460 Shah Alam, Selangor Darul Ehsan
Tel : 03-5123 4888 Fax : 03-5121 7818



A n n u a l R e p o r t 2 0 0 5

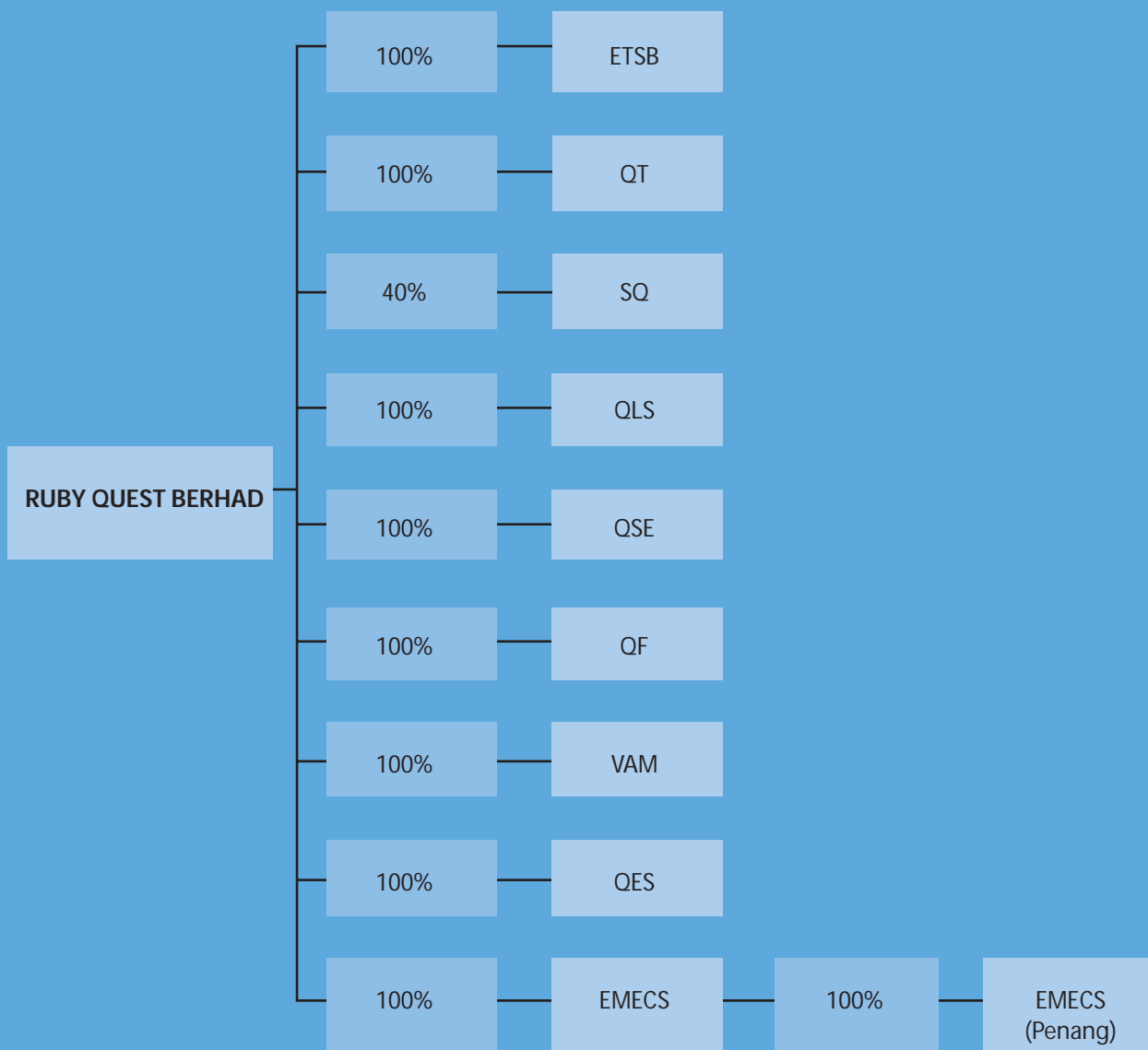


C O N T E N T S

	PAGE
Corporate Structure	01
5-Year Group Financial Highlights	02
Corporate Information	03-04
Directors' Profile	05-06
Management Team	07
Chairman's Statement	08-09
Corporate Governance Statement	10-14
Audit Committee Report	15-17
Statement of Internal Control	18-19
Additional Disclosures	20
Directors' Report	22-25
Statement by Directors and Statutory Declaration	26
Auditors' Report	27
Income Statements	28
Balance Sheets	29
Statements of Changes in Equity	30-31
Cash Flow Statements	32
Notes to the Financial Statements	33-62
Analysis of Shareholdings	63-65
List of Properties	66
Notice of Annual General Meeting	67-69
Form of Proxy	

CORPORATE STRUCTURE

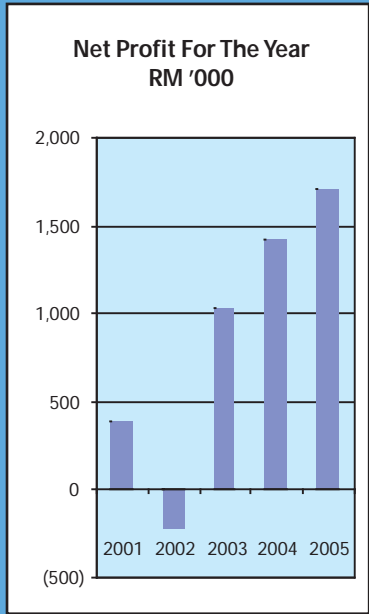
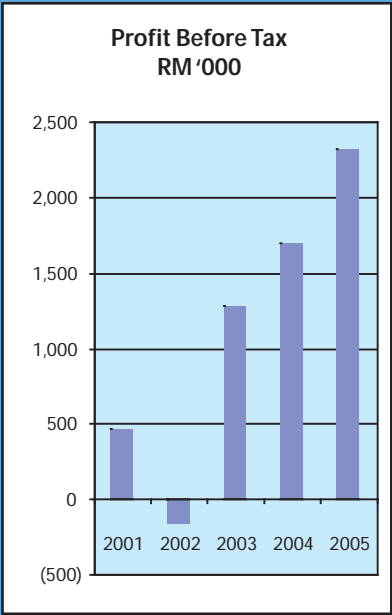
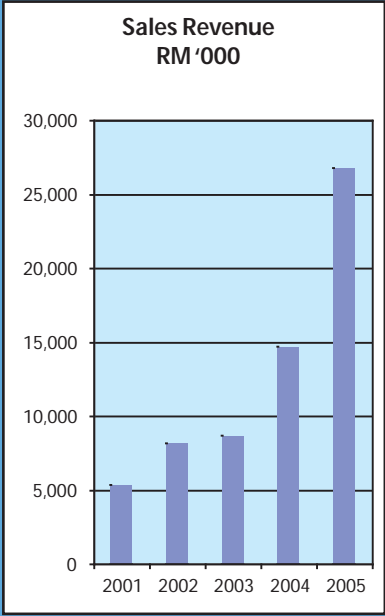
The corporate structure of the Group is set out below:



- ETSB : Envair Technology Sdn Bhd
- QT : Quest Technology Sdn Bhd
- SQ : Sebquest Technology Sdn Bhd
- QLS : Quest Liquid Separation Sdn Bhd
- QSE : Quest System & Engineering Sdn Bhd
- QF : Quest Filter Sdn Bhd
- VAM : Vokes Air (M) Sdn Bhd
- QES : Quest Equipment & Services Sdn Bhd
- EMECS : Envair Mecs Engineering Sdn Bhd
- EMECS (Penang) : Envair Mecs Engineering (Penang) Sdn Bhd

5-YEAR GROUP FINANCIAL HIGHLIGHTS

	FY2001 RM '000	FY2002 RM '000	FY2003 RM '000	FY2004 RM '000	FY2005 RM '000
Sales Revenue	5,414	8,187	8,773	14,730	26,847
Profit Before Taxation	468	(163)	1,285	1,692	2,272
Net Profit For The Year	392	(225)	1,030	1,421	1,716



CORPORATE INFORMATION

BOARD OF DIRECTORS

Directors

Tan Sri Dato' Mohamed Noordin bin Hassan	Chairman/ Non-Executive Director
Wong Peng Yew	Executive Vice Chairman
Sim Keng Siong	Managing Director
Lim Foo Seng	Executive Director
Md Hilmi bin Datuk Hj Md Noor	Independent Non-Executive Director
Shinichi Yamamoto	Independent Non-Executive Director
Looi Kem Loong	Independent Non-Executive Director

AUDIT COMMITTEE

Name	Designation	Directorship
Md Hilmi bin Datuk Hj Md Noor	Chairman	Independent Non-Executive Director
Looi Kem Loong	Member	Independent Non-Executive Director
Shinichi Yamamoto	Member	Independent Non-Executive Director
Lim Foo Seng	Member	Executive Director

CORPORATE INFORMATION (Cont'd)

COMPANY SECRETARY

Lim Foo Seng (MIA 12191)
Lim Fei Chia (MAICSA 7036158)

HEAD OFFICE AND REGISTERED OFFICE

No.6, Jalan Salung 33/26,
Shah Alam Technology Park,
Section 33, 40460 Shah Alam,
Selangor.

Telephone No.: 03-51234888
Facsimile No.: 03-51217818
E-mail address: rubyquest@po.jaring.my
Website: www.quest.com.my

AUDITORS

Yong & Leonard (*formerly known as K.K. Yong & Co.*)

PRINCIPAL BANKERS

Public Bank Berhad
Bumiputra-Commerce Bank Berhad
RHB Bank Berhad
AmBank (M) Berhad
OCBC Bank (Malaysia) Berhad

SHARE REGISTRAR

Bina Management (M) Sdn Bhd
Lot 10, The Highway Centre
Jalan 51/205
46050 Petaling Jaya
Selangor Darul Ehsan
Telephone No: 03-77843922
Facsimile No: 03-77841988

SPONSOR

Avenue Securities Sdn Bhd (*Company No: 682-X*)
Level 1, Bangunan Avenue,
No. 8, Jalan Damansara Endah, Damansara Heights
50490 Kuala Lumpur
Telephone No: 03-2711 8798
Facsimile No: 03-20938796

STOCK EXCHANGE

MESDAQ Market of Bursa Malaysia Securities Berhad (Bursa Securities)

DIRECTORS' PROFILE



Tan Sri Dato' Mohamed Noordin bin Hassan, a Malaysian aged 66, was appointed to the Board on 10 January 2005 and is the Chairman and Non-Executive Director of the Ruby Quest Berhad. He has more than 40 years of working experience with the Malaysian Government and corporate sectors. Whilst with the Government, he served in various Government Departments at District, States and Federal levels as Secretary General of the Ministry of Education, Ministry of Science, Technology and Environment and Deputy-Secretary General of the Ministry of International Trade & Industry and others.

Upon his retirement, he joined Petroliam Nasional Berhad ("Petronas") as Vice President Human Resource Management and subsequently, as Vice President Education. After he left Petronas, he continued to serve as a member of the Board of three Petronas subsidiaries. Currently, he is also Chairman of DNP Holdings Berhad, a public listed company and sits on the board of a number of its subsidiaries. He also sits on the board of UMW Holdings Berhad as an Independent Non-Executive Director.

Wong Peng Yew, a Malaysian aged 55, was appointed to the Board on 1 February 1997 and is the Executive Vice Chairman of Ruby Quest Berhad. He was based in the United Kingdom from 1978 till 1994 when he return to Malaysia in 1995 to joint Quest's Group of Companies. During his working career in the United Kingdom, he was the Finance Director of ARM Holdings Plc from 1990 to 1994. From 1986 to 1990 he was the Finance Director of European Silicon Structures Ltd. He worked at Procter and Gamble International Division based in the United Kingdom and report directly to the European Head Office in Geneva. Prior to that he was the European Finance Manager for CPG Group, a division of General Mills Inc. He has been a member of the Institute of Directors (UK) since 1992.



Sim Keng Siong, a Malaysian aged 34, was appointed to the Board on 28 January 2005 and is the Group Managing Director. He joined the Group in 1993. He has designed and successfully implemented various sizeable cleanroom projects throughout Malaysia. He has more than 10 years experience in the air filtration system and cleanroom industry. Mr. Sim graduated from Tunku Abdul Rahman College majoring in Mechanical Engineering. He has been the driving force in the growth, development and success of Envair Technology Sdn Bhd ("ETSB") and Envair Mecs Engineering Sdn Bhd ("EMECS"), two of the wholly owned subsidiaries of Ruby Quest Berhad. Both ETSB and EMECS are involved in the cleanroom technological services which represent the main drivers for the Group's business activities.

Lim Foo Seng, a Malaysian aged 36, was appointed to the Board on 28 January 2005 and is the Executive Director of Ruby Quest Berhad. He has 15 years experience in professional and commercial exposures. He is a member of the Malaysian Institute of Certified Public Accountants, a Chartered Accountant (Malaysia) and a member of the Malaysian Institute of Accountants. He has served in one of the international accounting firms, Deloitte Kassim Chan, based in Kuala Lumpur, from 1989 to 1995. It was then he acquired considerable knowledge, experience and exposure in management consultancy, taxation and accounting and auditing standards.

He left the accounting firm in 1995 to join Arab-Malaysian Corporation Berhad Group ("Amcorp Group") and is involved in business planning, venture capital activities, corporate restructuring and monitoring of portfolio companies in his capacity as Associate Director. He has also served as a board member of various portfolio companies of Amcorp Group. His last position with Amcorp Group was Chief Financial Officer of MCM Technologies Berhad, a subsidiary of Amcorp which was listed on MESDAQ Market. At present, he is the Chief Financial Officer of the Group.



DIRECTORS' PROFILE (Cont'd)

Md Hilmi Bin Datuk Hj Md Noor, a Malaysian aged 58, was appointed to the Board on 27 January 2005 and is an Independent Non-Executive Director of Ruby Quest Berhad. He is a member of Malaysian Institute of Accountants and Association of Chartered Certified Accountants, UK. He started off his career in the accounting profession with accounting firms from 1970 to 1973. From 1973 till 1997, he has held various senior finance positions with various established companies in Malaysia. Thereafter, he joined WCT Engineering Berhad, a public listed company, in 1997 until his retirement in 2003 as General Manager, Corporate & Finance.



Shinichi Yamamoto, a Japanese aged 60, was appointed to the Board on 28 January 2005 and is an Independent Non-Executive Director of Ruby Quest Berhad. He holds a Bachelor of Economics from Osaka University, Japan. He has 20 years of experience in environmental related business. In 1983 to 1995, he ventured into the business of building maintenance, refurbishment of water tanks and construction of elevated pressed steel water tanks and secured contracts from various local authorities and universities. At present, he is working as coordinator for some Japanese companies, involving in environmental related activities such as high tech waste disposal system, wastewater treatment plant and incinerator plant. He is also acting as a consultant for Ebara Corp. Co. Ltd.

Looi Kem Loong, a Malaysian aged 30, was appointed to the Board on 12 January 2006 and is an Independent Non-Executive Director of Ruby Quest Berhad. Currently, he is the director of Asia Link Corporate Services Sdn Bhd. Having completed his Bachelor in Accounting and Finance from University of Strathclyde (Scotland), Mr. Looi continued his articleship with an internationally affiliated audit firm. He is an Associate Member of the Institute of Chartered Accountants in England and Wales and also a member of the Malaysian Institute of Accountants. Having served as a manager in AmMerchant Bank Berhad and vice president in Newfields Advisors Sdn Bhd, Mr. Looi brings with him working experiences in audit, accountancy, corporate advisory and merchant banking.



Notes:

1. *Family Relationship with Director and / or Major Shareholder*
None of the Directors has any family relationships with any director and / or major shareholder of the Company
2. *Conflict of Interest*
None of the Directors has any conflict of interest with the Company
3. *Conviction of Offences*
None of the Directors has been convicted of any offences in the past ten (10) years.

MANAGEMENT TEAM



Sitting (left - right)

Lim Yin Leng	Personal Assistant to Group Managing Director
Chan Sook Yin	Finance Manager of Ruby Quest Berhad
Wong Peng Yew	Executive Vice Chairman of Ruby Quest Berhad
Sim Keng Siong	Group Managing Director
Lim Foo Seng	Group Chief Financial Officer and Executive Director of Ruby Quest Berhad
Simon Loh Chi Yin	Executive Director of Envair Mecs Engineering Sdn Bhd

Standing (left-right)

Pauline Chan Poh Leng	Marketing Manager of Envair Mecs Engineering (Penang) Sdn Bhd
Koo Be How	Executive Director of Quest Liquid Separation Sdn Bhd
Chew Keh Chyang	Business Development Manager of Quest Technology Sdn Bhd
Chan Chee Seng	General Manager of Envair Mecs Engineering (Penang) Sdn Bhd
Tay Kok Seng	General Manager of Envair Technology Sdn Bhd
Tan Joo Wee	Executive Director of Envair Mecs Engineering (Penang) Sdn Bhd
Low Siew Ping	Executive Director of Vokes Air (M) Sdn Bhd